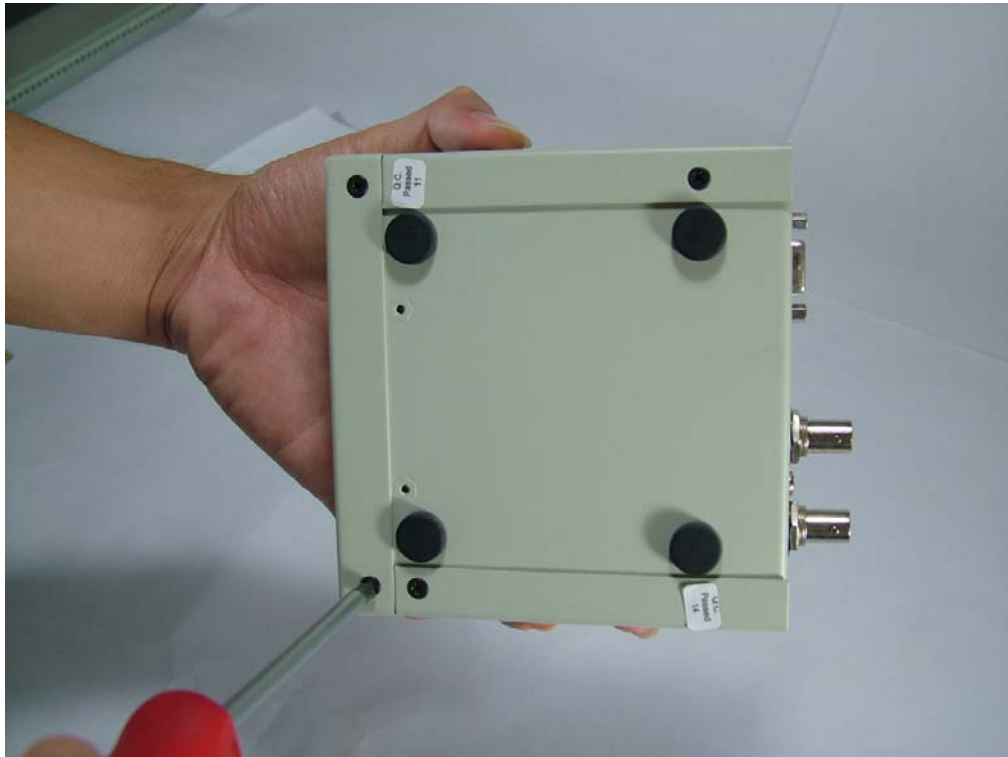
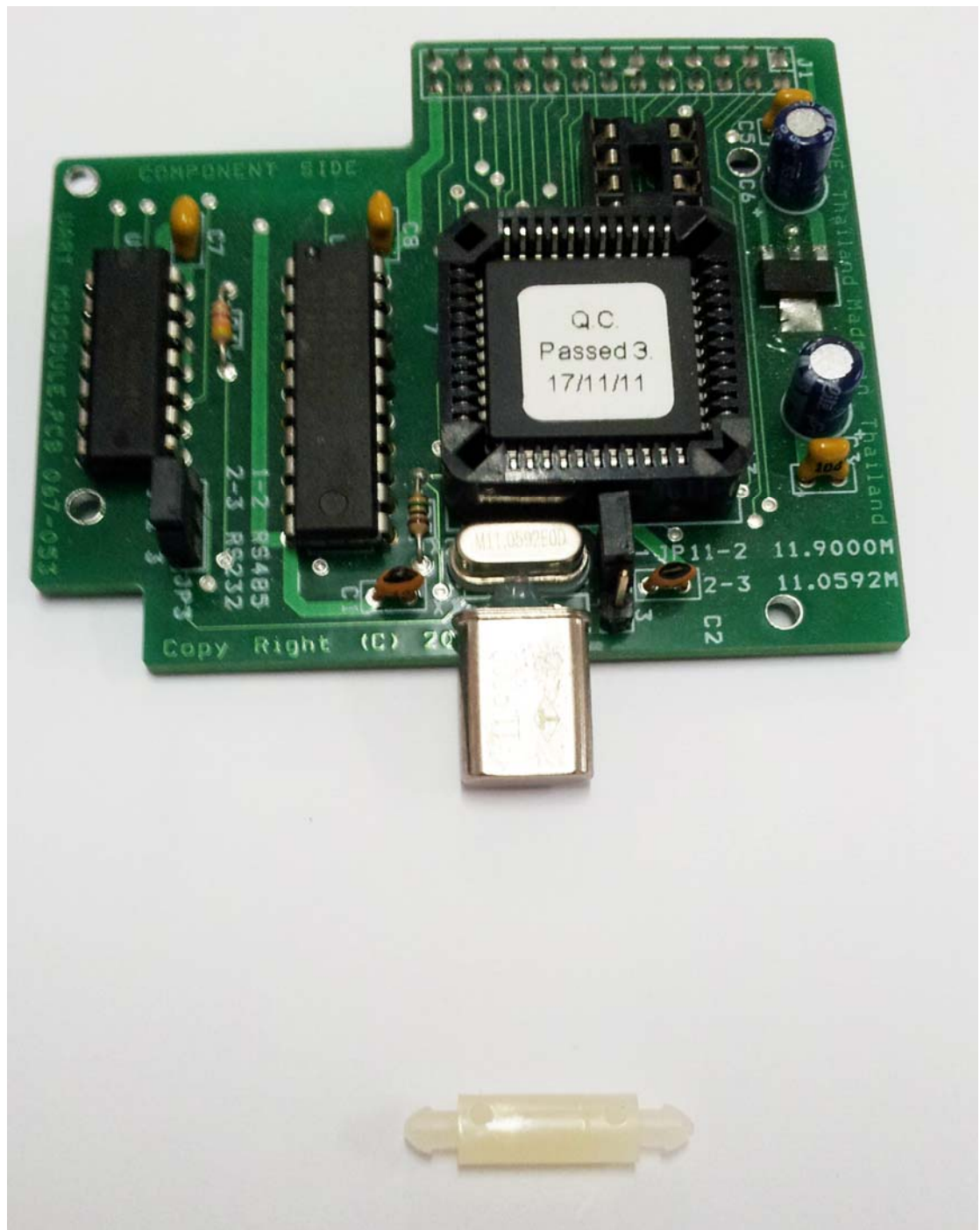


How to install UART Daughter Board to the VSI-Pro Max.

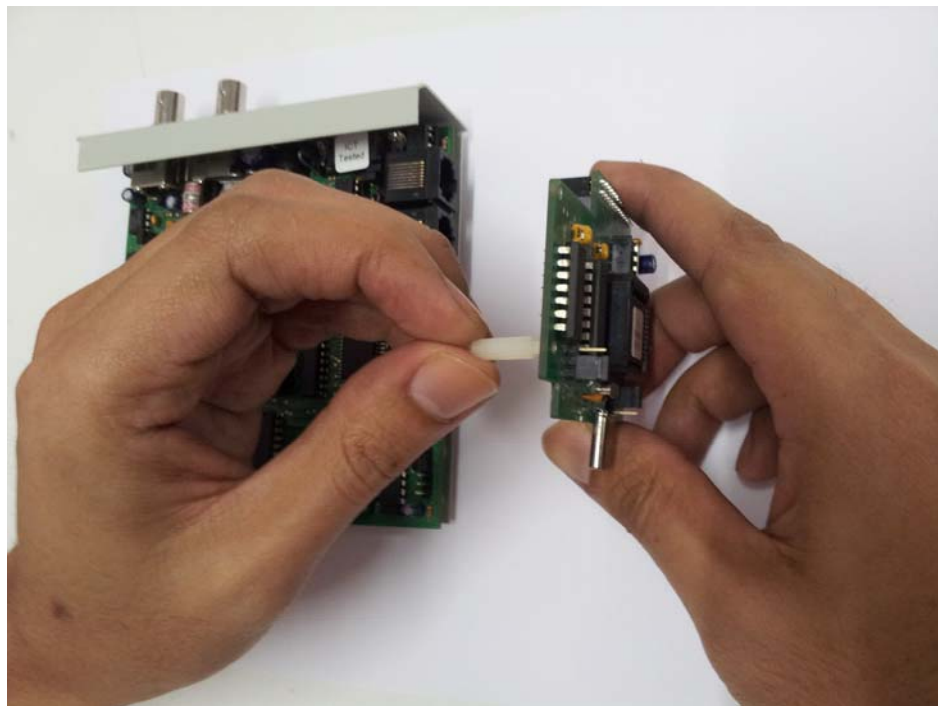
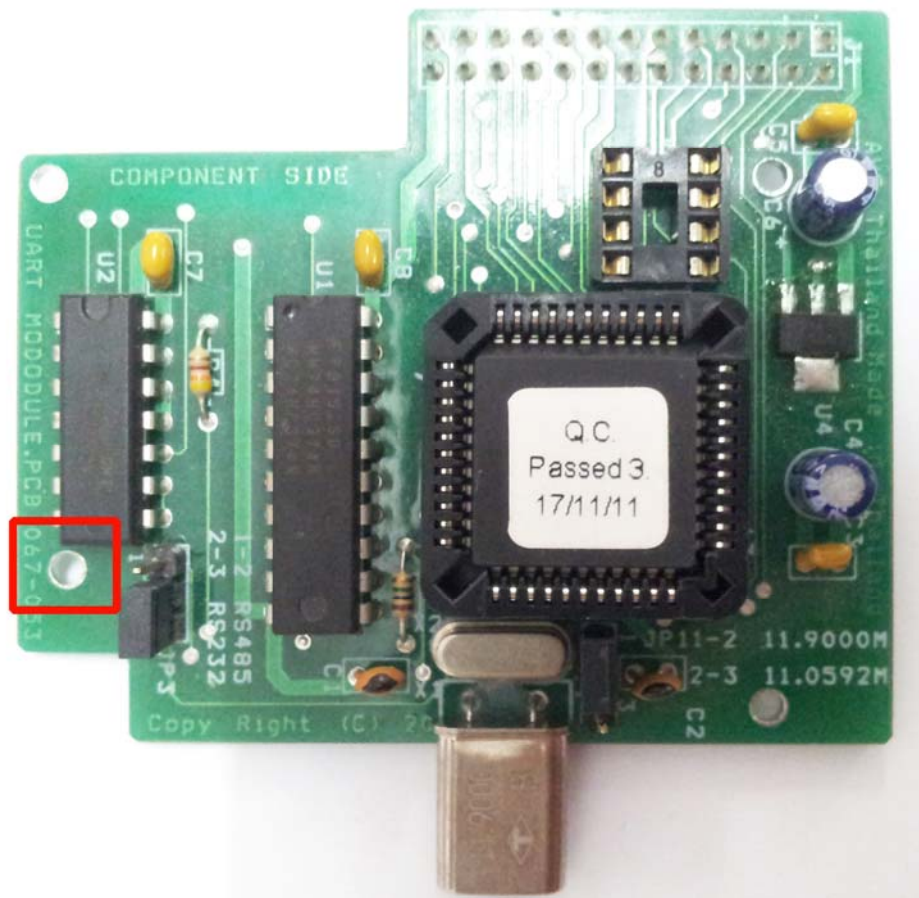
- 1.) Take the cover off with 6 screws.



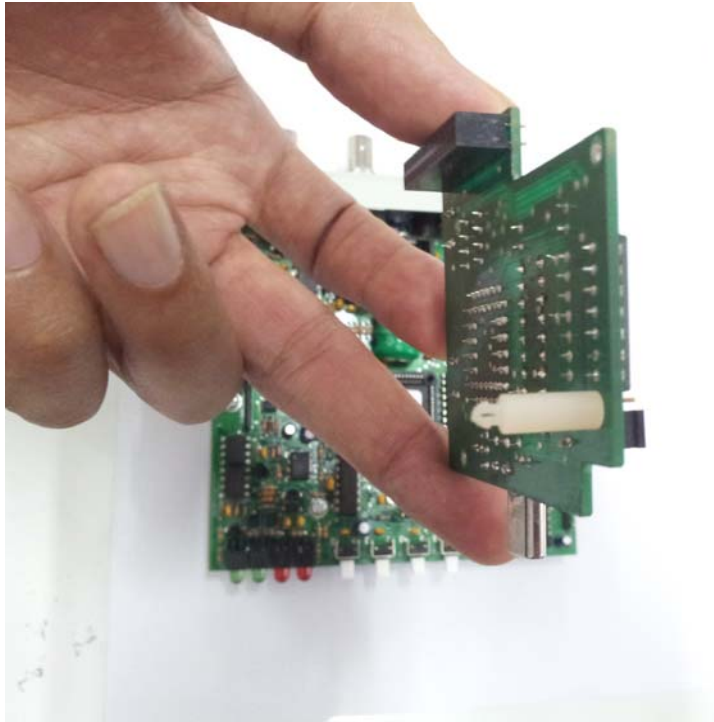
2.) Prepare UART Board and Stand.



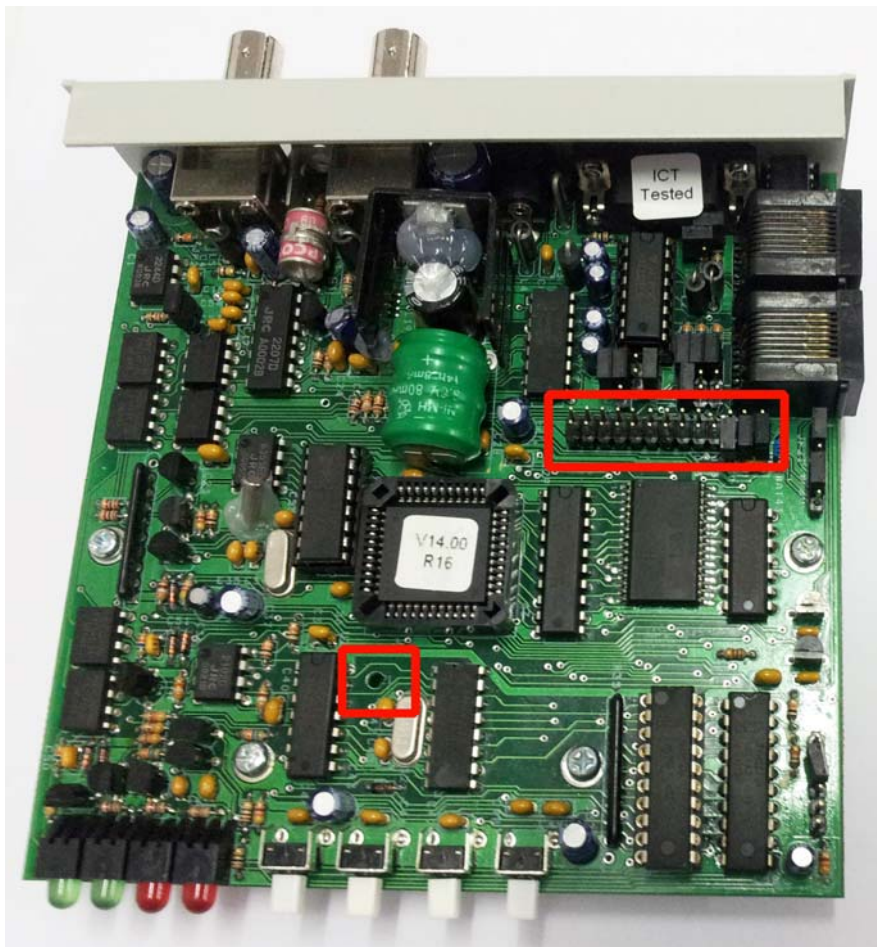
3.) Plug stand into the UART Board at the red point follows picture below.



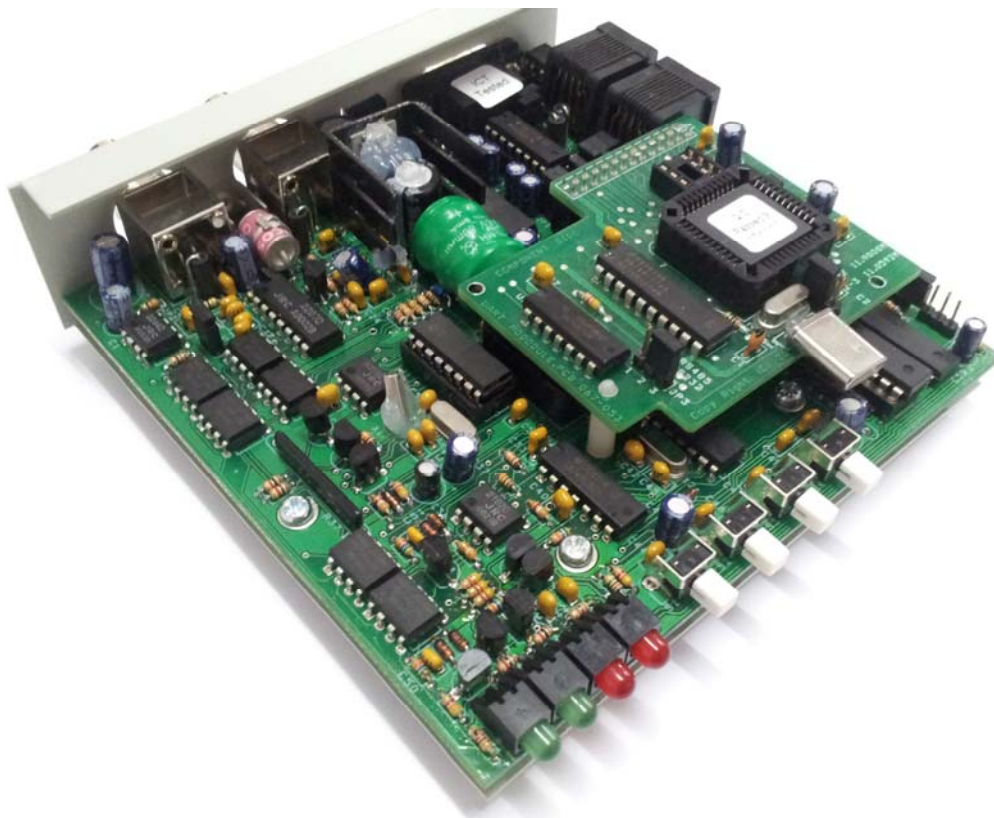
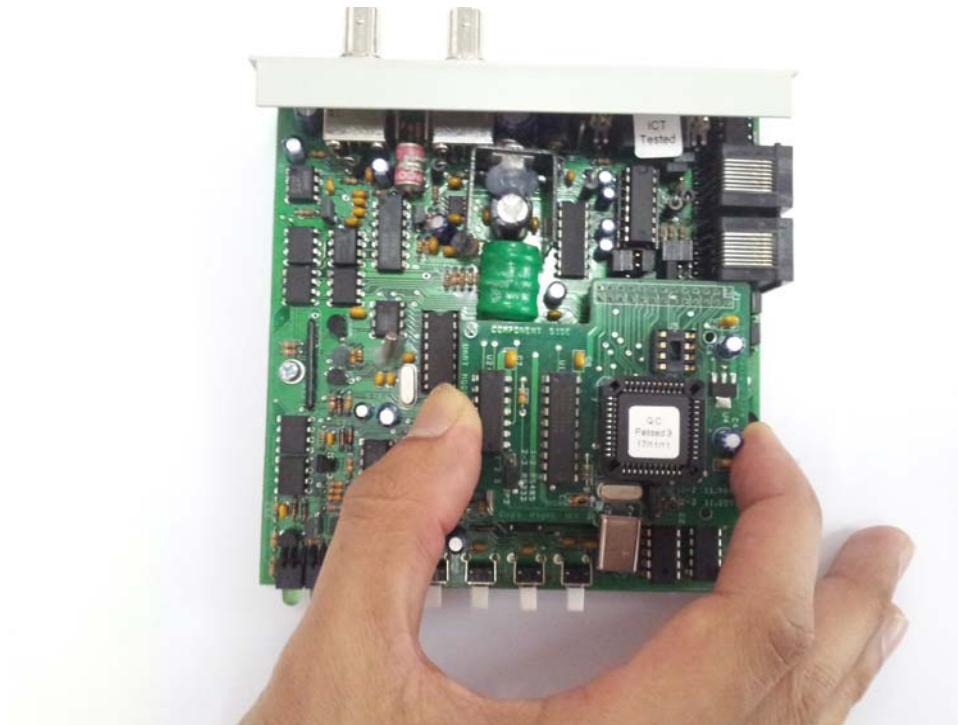




4.) Plug the UART Board install to the VSI-Pro Max.



Put UART Board with stand into the red point on the VSI-Pro Max.



5.) Finished close all cover.